



SHELTER AFRIQUE
Financing Affordable Housing for Africa

Shelter Afrique Development Bank **ShafDB**

Financing

Affordable Housing for All

www.shelterafrique.org



Shelter Afrique Development Bank(ShafDB) is the Pan-African Multilateral Development Bank(MDB) dedicated to promoting and financing housing, urban development and related infrastructure.

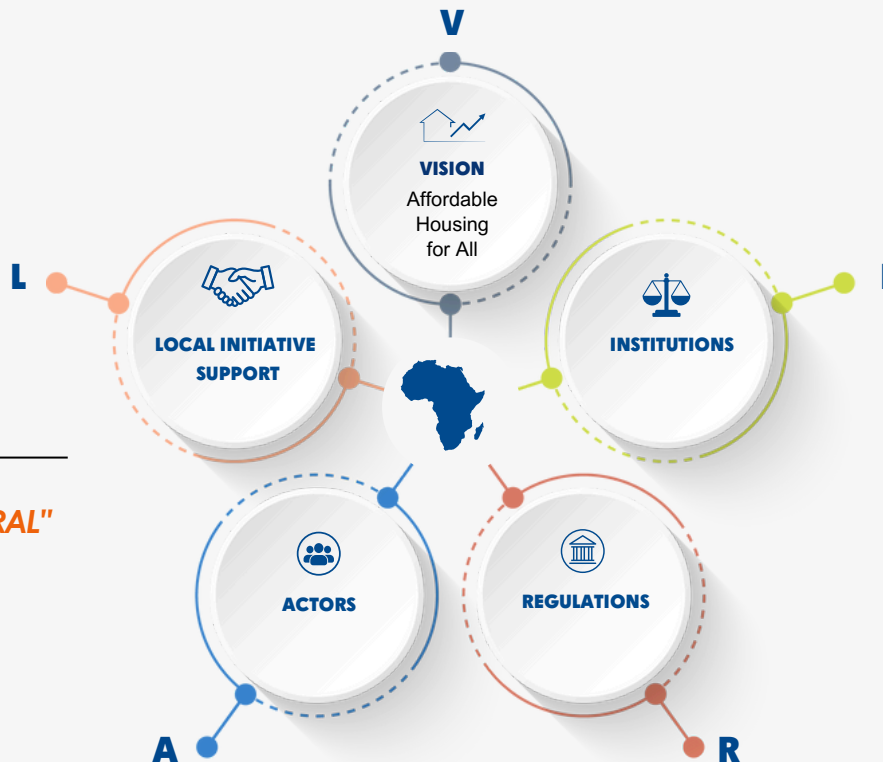
It operates through a shareholding of 44 African Governments
and two institutional shareholders:
the African Development Bank (AfDB) and
the **Africa Reinsurance Corporation (Africa-Re)**.

Our institution is involved in financing housing and related infrastructure across the value chain, both on the demand and supply sides through its four **(4) business lines**: Financial Institutions Group(**FIG**), the Project Finance Group(**PFG**), the Sovereign and Public-Private partnerships(**PPP**) Group, and the Fund Management Group(**FMG**)

Our Strategy

The ShafDB VIRAL Model

Making Access to Housing "VIRAL"



Shelter Afrique Development Bank Membership Benefits



Membership in Shelter Afrique Development Bank offers several benefits, including:

- Joining a Pan-African Multilateral Development Bank with 44 member countries, AfDB, Africa-Re,
- Financing, structuring PPPs and Advisory Services for public and private entities in the Country,
- Accessing investment opportunities across forty-four (44) member countries for EPCs, developers, investors, and urban infrastructure providers,
- A Board seat, depending on the level of shareholding (10%),
- Employment and board eligibility for nationals of the Country as required by the Statutes and Policies,
- Eligibility to host Shelter Afrique's Annual General Shareholders' meeting (AGM) in the country
- Knowledge-sharing and best practices in housing development from member countries, through our Centre of Excellence (CoE),
- Promotion of intra-African trade in building materials, alternative construction technology and financial services,
- Access to thematic investment platforms (Green/Climate/Resilience, Diaspora, Gender, Migrants/Refugees, Islamic finance, bulk infrastructure, SME/Trade Finance for building materials, etc.)

With ShafDB's ongoing transformation, fully supported by our shareholders, we continue to drive meaningful progress across the housing value-chain. This enables the growth of construction materials industries, fosters job creation, boosts trade, and delivers decent and affordable homes — ultimately contributing to the sustainable growth of African economies.

Our Products



Financial Institutions Group (FIG)

We finance FIs

- Mortgage Finance
- Housing Microfinance.
- Trade Finance
- SMEs - Housing Value Chain
- Housing Funds
- Mortgage Refinancing Companies
- Rent and Rent-to-Own
- Advisory Services



Project Finance Group (PFG)

We finance private projects

- Developer Finance.
- Corporate Loans.
- Last Mile Infrastructure.
- Students Accommodation.
- Alternative Building Technologies.
- Social Housing Programs.
- Advisory Services.



Sovereign and Public- Private Partnerships (PPP)

We structure and finance PPPs

- State Housing Corporations
- Public/Private Partnerships.
- Social Housing Programs.
- Rent and Rent-to-Own.
- Urban Regeneration.
- Equity Joint Ventures
- Advisory Services

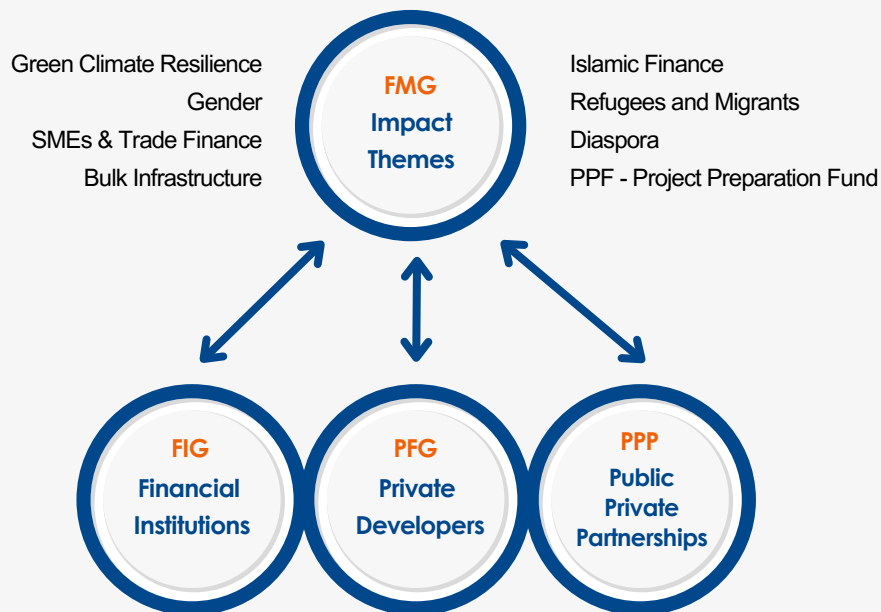


Fund Management Group (FMG)

We focus on impact areas

- Green Climate Resilience
- Gender
- SMEs & Trade Finance.
- Bulk Infrastructure
- Islamic Finance
- Refugees and Migrants
- Diaspora
- PPF - Project Preparation Fund

Entities We Finance



The journey of a thousand miles starts with a “first step”.

The journey has begun!

Follow Our Transformation



Longonot Rd, Shelter Afrique Centre

P.O.Box 41479 - 00100 Nairobi, Kenya.

Tel: +254 20 4978000; **Email:** info@shelterafrique.org



Longonot Rd, Shelter Afrique Centre
P.O.Box 41479 - 00100 Nairobi, Kenya
Tel: +254 20 4978000

Email: info@shelterafrique.org

www.shelterafrique.org